

TEXAS TRANSPORTATION COMMISSION  
MINUTE ORDER

Williamson County

Page 1 of 1

Austin District

The Austin District and the City of Florence have requested the following actions:

1. Designate SH 195 on a new location on the state highway system from approximately 1.6 miles north of SH 138 southward to approximately 1.2 miles south of FM 970, a distance of approximately 3.9 miles, and re-designate the former alignment as BS 195-H;
2. Designate SH 195 on a new location on the state highway system from the intersection of County Road 241 southward to the former alignment of SH 195, a distance of approximately 3.0 miles, and re-designate the former alignment as SS 376;
3. Designate SH 195 on a new location on the state highway system from approximately 0.8 miles north of County Road 239 southeastward to the former alignment of SH 195, a distance of approximately 2.1 miles, and re-designate the former alignment as SS 377; and
4. Extend the designation of SH 138 from the former alignment of SH 195 eastward to the new alignment of SH 195, a distance of approximately 0.6 miles.

Pursuant to Texas Transportation Code, §§201.103 and 221.001, the executive director of the Texas Department of Transportation has recommended these actions.

The Texas Transportation Commission (commission) finds that these actions will facilitate the flow of traffic, promote public safety, and maintain continuity of the state highway system and are necessary for the proper development and operation of the system.

IT IS THEREFORE ORDERED by the commission that:

1. SH 195 is designated on a new location on the state highway system from approximately 1.6 miles north of SH 138 southward to approximately 1.2 miles south of FM 970, a distance of approximately 3.9 miles, and the former alignment is re-designated as BS 195-H;
2. SH 195 is designated on a new location on the state highway system from the intersection of County Road 241 southward to the former alignment of SH 195, a distance of approximately 3.0 miles, and the former alignment is re-designated as SS 376;
3. SH 195 is designated on a new location on the state highway system from the former alignment of SH 195 southeastward to the former alignment of SH 195, a distance of approximately 2.1 miles, and the former alignment is re-designated as 377; and
4. SH 138 is extended on the state highway system from the former alignment of SH 195 eastward to the new alignment of SH 195, a distance of approximately 0.6 miles, as shown on Exhibit A.

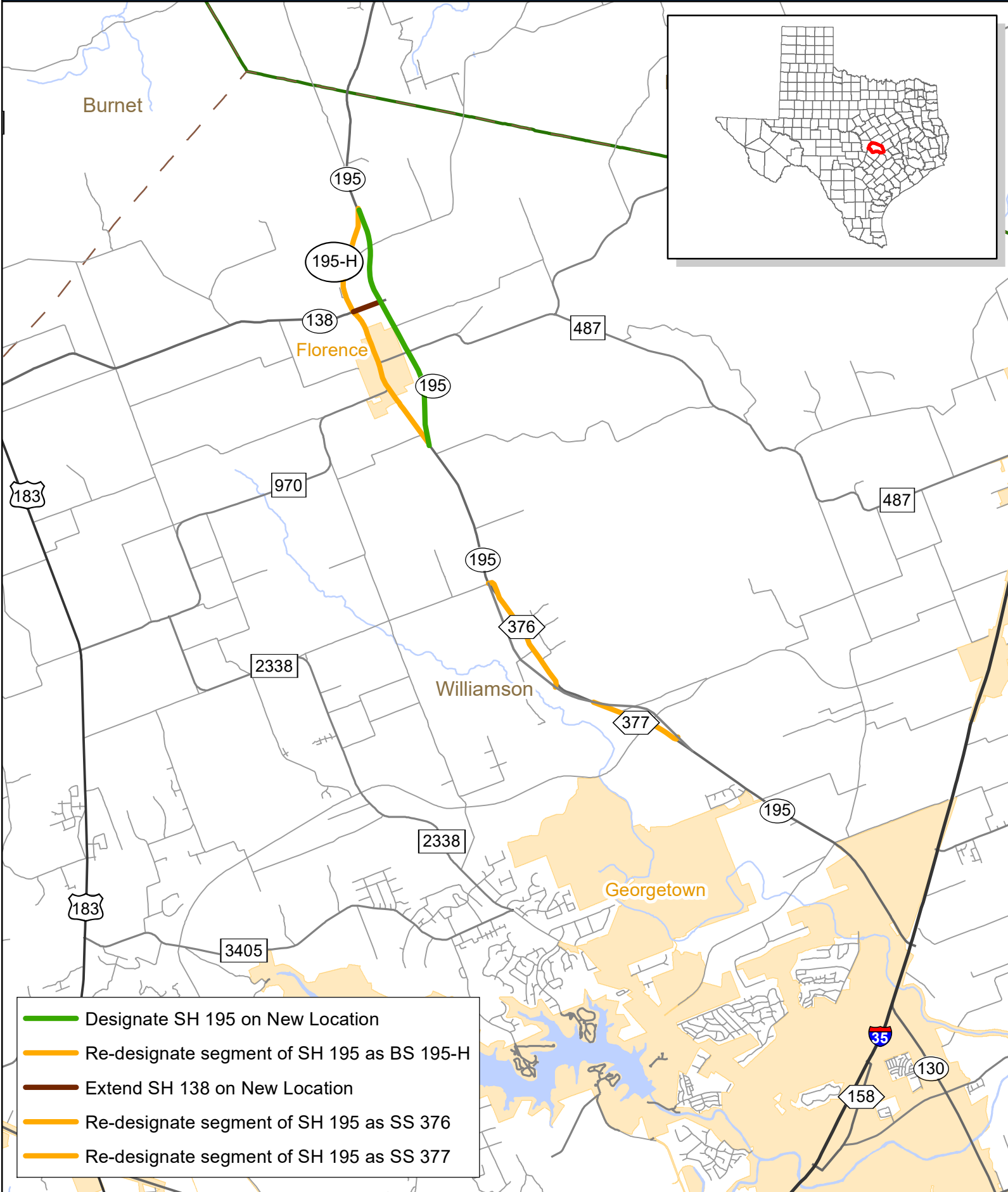
Submitted and reviewed by:

  
\_\_\_\_\_  
Director, Transportation Planning  
and Programming Division

Recommended by:

  
\_\_\_\_\_  
Executive Director

115717 MAR 26 20  
Minute Date  
Number Passed



- Designate SH 195 on New Location
- Re-designate segment of SH 195 as BS 195-H
- Extend SH 138 on New Location
- Re-designate segment of SH 195 as SS 376
- Re-designate segment of SH 195 as SS 377

