

TEXAS TRANSPORTATION COMMISSION
MINUTE ORDER

Montgomery County

Page 1 of 1

Houston District

The Houston District, Montgomery County and the City of Magnolia have requested the designation and redesignation of FM 1488 as follows:

1. Designate FM 1488 on a new location on the state highway system from approximately 1.8 miles west of Magnolia, northward and eastward to the intersection of proposed SH 249, a distance of approximately 4.2 miles.
2. Designate FM 1488 concurrent with proposed SH 249 on the state highway system from the intersection of proposed FM 1488 and proposed SH 249 southward to the intersection of existing FM 1488, a distance of approximately 0.9 mile.
3. Redesignate existing FM 1488 as Business FM 1488-P on the state highway system from approximately 1.8 miles west of Magnolia eastward to the intersection of proposed SH 249, a distance of approximately 3.4 miles

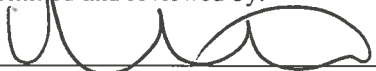
Pursuant to Texas Transportation Code, §§201.103 and 221.001, the executive director of the Texas Department of Transportation has recommended these actions.

The Texas Transportation Commission (commission) finds that these actions will facilitate the flow of traffic, promote public safety, and maintain continuity of the state highway system and are necessary for the proper development and operation of the system.

IT IS THEREFORE ORDERED by the commission that:

1. FM 1488 is designated on a new location on the state highway system from approximately 1.8 miles west of Magnolia, northward and eastward to the intersection of proposed SH 249, a distance of approximately 4.2 miles, as shown on Exhibit A.
2. FM 1488 is designated concurrent with proposed SH 249 on the state highway system from the intersection of proposed FM 1488 and proposed SH 249 southward to the intersection of existing FM 1488, a distance of approximately 0.9 mile, as shown on Exhibit A.
3. The existing FM 1488 is redesignated as Business FM 1488-P on the state highway system from approximately 1.8 miles west of Magnolia eastward to the intersection of proposed SH 249, a distance of approximately 3.4 miles, as shown on Exhibit A.

Submitted and reviewed by:



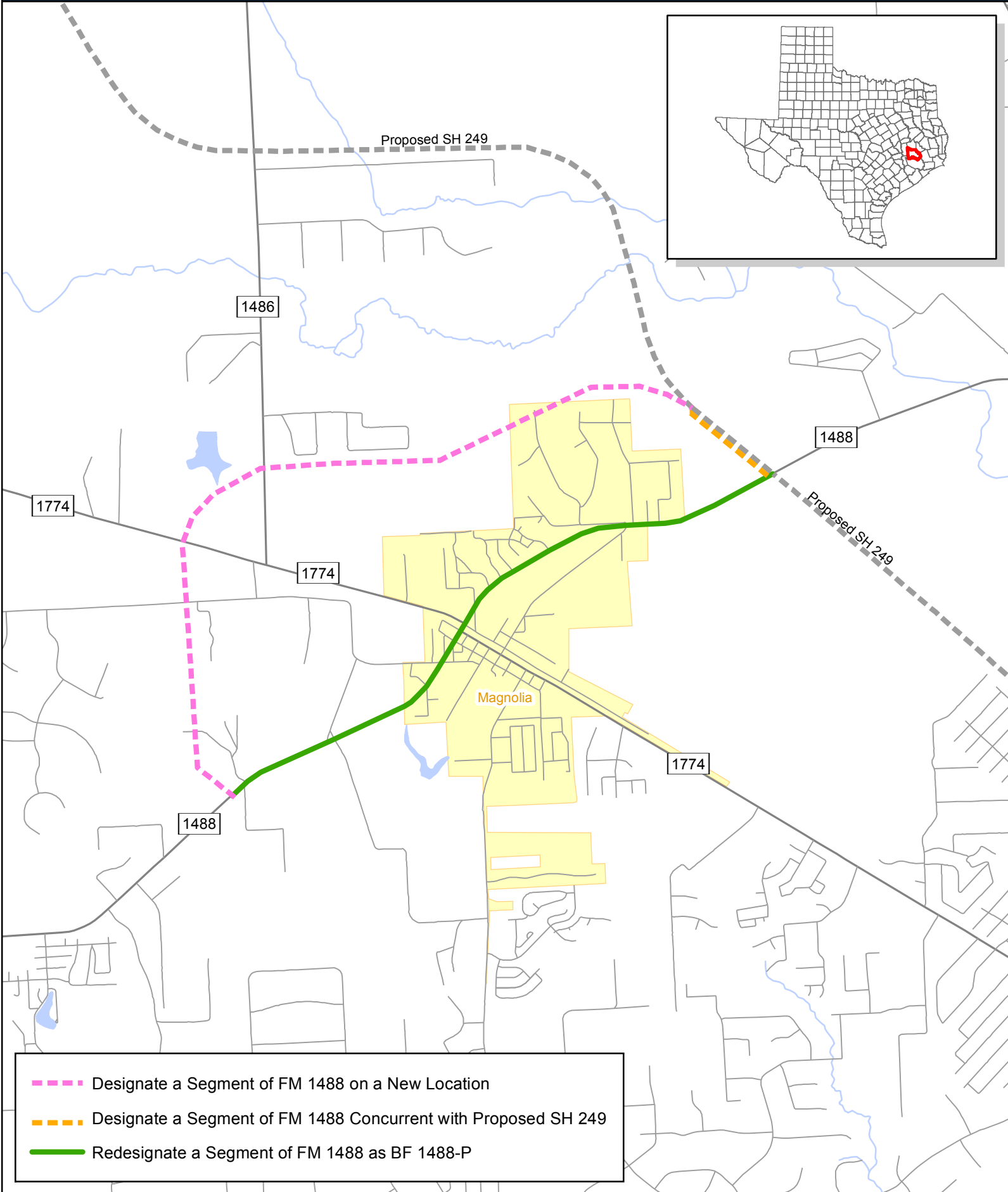
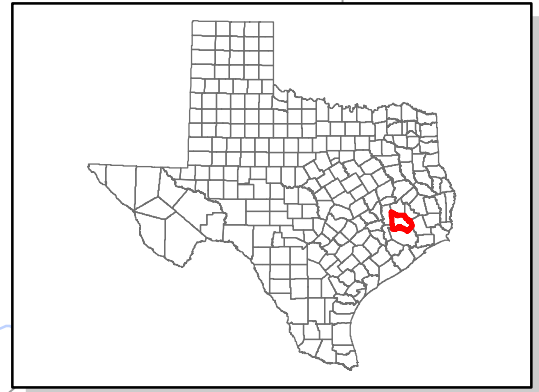
Director, Transportation Planning
and Programming Division

Recommended by:



Executive Director

115502 MAY 30 '19
Minute Number Date Passed



- - - Designate a Segment of FM 1488 on a New Location
- - - Designate a Segment of FM 1488 Concurrent with Proposed SH 249
- Redesignate a Segment of FM 1488 as BF 1488-P

